



HENDI

Tools for Chefs

HIGH VOLTAGE INSECT KILLER

HND270271, HND270288



You should read this user manual carefully before using the appliance.

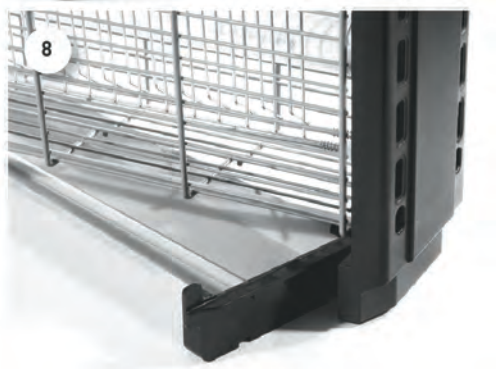
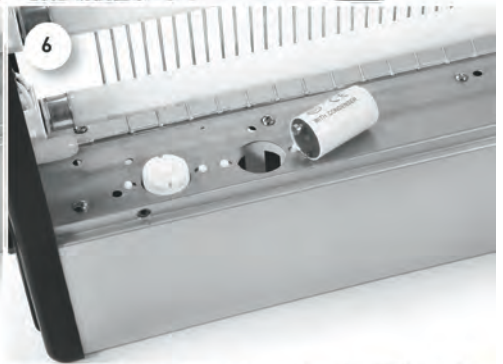
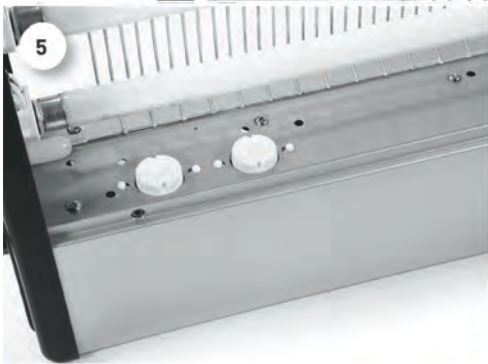
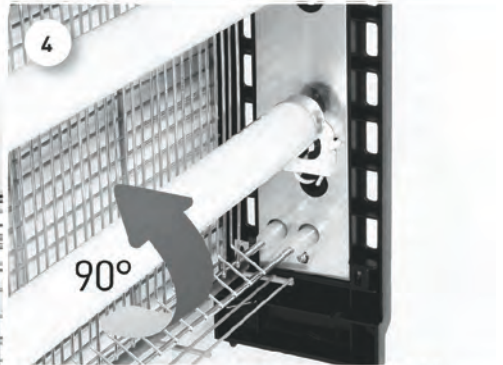


Keep these instructions with the appliance.



For indoor use only.






Dear Customer,

Thank you for purchasing this HENDI appliance. Before using the appliance for the first time, please read this manual carefully, paying particular attention to the safety regulations outlined below.


Safety regulations

- This appliance is intended for commercial use.
- The appliance must only be used for the purpose for which it was intended and designed. The manufacturer is not liable for any damage caused by incorrect operation and improper use.
- Keep the appliance and electrical plug away from water and any other liquids. In the event that the appliance should fall into water, immediately remove plug from the socket and do not use until the appliance has been checked by a certified technician. Failure to follow these instructions could cause a risk to lives.
- Never attempt to open the casing of the appliance yourself.
- Do not insert any objects in the casing of the appliance.
- Do not touch the plug with wet or damp hands.
-  **DANGER OF ELECTRIC SHOCK!** Do not attempt to repair the appliance yourself. In case of malfunctions, repairs are to be conducted by qualified personnel only.
- **Never use a damaged appliance!** Disconnect the appliance from the electrical outlet and contact the retailer if it is damaged.
- **WARNING!** Do not immerse the electrical parts of the appliance in water or other liquids. Never hold the appliance under running water.
- Regularly check the power plug and cord for any damage. If the power plug or power cord is damaged, it must be replaced by a service agent or similarly qualified persons in order to avoid danger or injury.
- Make sure the cord does not come in contact with sharp or hot objects and keep it away from open fire. To pull the plug out of the socket, always pull on the plug and not on the cord.
- Ensure that the cord (or extension cord) is positioned so that it will not cause a trip hazard.
- Always keep an eye on the appliance when in use.
- **WARNING!** As long as the plug is in the socket the appliance is connected to the power source.
- Turn off the appliance before pulling the plug out of the socket.
- Never carry the appliance by the cord.
- Do not use any extra devices that are not supplied along with the appliance.
- Only connect the appliance to an electrical outlet with the voltage and frequency mentioned on the appliance label.
- Connect the power plug to an easily accessible electrical outlet so that in case of emergency the appliance can be unplugged immediately. To completely switch off the appliance pull the power plug out of the electrical outlet.



- Never use accessories other than those recommended by the manufacturer. Failure to do so could pose a safety risk to the user and could damage the appliance. Only use original parts and accessories.
- This appliance is not intended for use by persons (including children) with reduced physical, sensory or mental capabilities, or lack of experience and knowledge.
- This appliance must not be used by children under any circumstances.
- Keep the appliance and its cord out of reach of children.
- Always disconnect the appliance from the mains if it is left unattended or is not in use, and before assembly, disassembly or cleaning.
- Never leave the appliance unattended during use.

Special safety regulations (Fig. 7)

- Use the appliance only as described in this manual
-  **HIGH VOLTAGE! DON'T TOUCH THE ELECTRIC NET!** This appliance uses high voltage (more than 1000 Volt). Never touch the high-voltage grids. During cleaning and/or maintenance ALWAYS remove the plug from the socket and discharge the appliance afterwards (discharge by short-circuiting the high-voltage grids with a metal object with an isolated grip).
- **DANGER OF EXPLOSION!** Do not use near flammable liquids or gases.
- The appliance is not suitable for household room illumination.
- NOTICE: UV emitted from this product. Minimize exposure to eyes and skin. Use appropriate shielding.
- Do not stare at the UV lamp source.
- The appliance is not suitable for use in barns, stable and similar locations.

Intended use

- This appliance is designed solely for attracting and electrocuting flies and other insects. Any other use may lead to damage of the appliance or personal injury.
- Operating the appliance for any other purpose shall be deemed a misuse of the device. The user shall be solely liable for improper use of the device.

Grounding installation

This appliance is classified as **protection class I** and must be connected to a protective ground. Grounding reduces the risk of electric shock by providing an escape wire for the electric current.

This appliance is fitted with a power cord that has a grounding wire and grounded plug. The plug must be plugged into an outlet that is properly installed and grounded.

User instructions

Position the appliance as indicated at "Best place for fixing". Put the plug into the socket. The fluorescent tube should light now. After some time the drawer of the Electronic Fly Trap will become

full and should be emptied. Remove the plug from the socket and remove the drawer (Fig. 8) to empty it. Suitable for a room with an area of 50m² (HND270271) / 100m² (HND270288) maximum.



In the packing you will find the following parts

- The appliance complete with tubes and drawer
- A chain to hang the appliance
- The user manual

Best place for fixing

- Away from windows or doors because of draft and daylight.
- Away from places where food will be prepared or presented.
- Close to the area where flies come in but away from draft and wind.
- Somewhere the appliance can stay 24 hours a day.
- Above eye level and so that no one can bump the appliance.
- Out of reach from flammable objects like curtains, lace curtains etc.
- Away from flammable liquids or gases. DANGER OF EXPLOSION
- This appliance can stand as well as hang by the included chain (Fig. 1)

Replacement of tubes and starters

Remove the plug from the socket. Remove the screws at the bottom of the housing (Fig. 2) and the outer grid upper screws and remove it (Fig. 3). The outer grid consists of two parts, therefore it is sufficient to remove the screws on one side only from the fluorescent lamp and not on the inner side of the grid. Turn the lamp 90 ° and remove the handle

(Fig. 4). Place the new lamp in the reverse order of its removal. Almost equal operations to be carried out in order to exchange starters (Fig. 5 and 6). After replacing the lamp and / or starters retighten the outer grid. Do not turn on and do not use without a grid - danger of electric shock.

Preparations before using for the first time

- Check to make sure the appliance is undamaged. In case of any damage, contact your supplier immediately and do NOT use the appliance.
- Remove all the packing material and protection film (if applicable).
- Keep the packaging if you intend to store your appliance in the future.
- Clean the appliance with luke-warm water and a soft cloth.
- Place the appliance on a level and steady surface, unless mentioned otherwise.
- Make sure there is enough clearance around the appliance for ventilation purposes.
- Position the appliance in such a way that the plug is accessible at all times.

Cleaning and maintenance

- Always remove the plug from the socket before cleaning the appliance.
- Beware: Never immerse the appliance in water or any other liquid!
- Clean the outside of the appliance with a damp cloth (water with mild detergent).
- Never use aggressive cleaning agents or abrasives. Do not use any sharp or pointed objects. Do not use petrol or solvents! Clean with a damp cloth and detergent if necessary. Do not use abrasive materials.
- Clean the ventilation slots (if applicable) with the vacuum cleaner.

Technical specifications

Article number	HND270271	HND270288
Voltage and frequency	220-240V- 50/60Hz	
Power input	22W	36W
Tube icon	GLEECON F8T5/BL368	GLEECON F15T8/BL368
Lamp type	2x8W G5 (double capped fluorescent lamp)	2x15W G13 (double capped fluorescent lamp)
Classification	Class I	
Ambient temperature	10°C - 45 °C	
Relative humidity	10-70% RH	
Ultraviolet	UV-A (315-400nm)	
Lamp dimension	(D)16x(L)288 mm	(D)25.4x(L)435 mm
Chain length	400 mm	570 mm
Exterior dimensions	335x90x(H)260 mm	485x90x(H)310 mm
Net weight	2 kg	3 kg

Warranty

Any defect affecting the functionality of the appliance which becomes apparent within one year after purchase will be repaired by free repair or replacement provided the appliance has been used and maintained in accordance with the instructions and has not been abused or misused in any way. Your statutory rights are not affected. If the appliance is claimed under warranty, state where and

when it was purchased and include proof of purchase (e.g. receipt).

In line with our policy of continuous product development we reserve the right to change the product, packaging and documentation specifications without notice.

Discarding & Environment

When decommissioning the appliance, the product must not be disposed of with other household waste. Instead, it is your responsibility to dispose of your waste equipment by handing it over to a designated collection point. Failure to follow this rule may be penalized in accordance with applicable regulations on waste disposal. The separate collection and recycling of your waste equipment at the time of disposal will help conserve natural re-

sources and ensure that it is recycled in a manner that protects human health and the environment.

For more information about where you can drop off your waste for recycling, please contact your local waste collection company. The manufacturers and importers do not take responsibility for recycling, treatment and ecological disposal, either directly or through a public system.



Important notice to UK users

This appliance is fitted with a UK approved mains plug and a 13A fuse. Should the fuse need to be replaced, an ASTA or BSI approved BS1362 fuse, rated

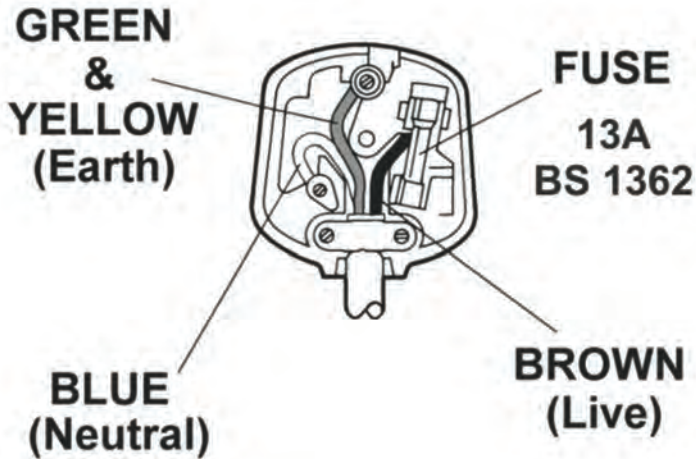
at 13A must be used. If the plug needs replacing, ensure that the fuse is removed beforehand. Always dispose of defunct plugs and fuses immediately.


Connecting a mains plug

The wires in the mains lead are coloured as following:

Blue: NEUTRAL **Brown:** LIVE **Green & Yellow:** EARTH

As these colours may not correspond to the coloured markings identifying the terminals in your plug, proceed as follows:



- The wire coloured BLUE must be connected to the terminal marked with the letter N or coloured BLUE or BLACK.
- The wire coloured BROWN must be connected to the terminal marked with the letter L or coloured BROWN or RED.
- The wire coloured GREEN & YELLOW must be connected to the terminal marked with the letter E or coloured GREEN or GREEN & YELLOW or marked with the Earth Symbol 

If you have any doubt about the electrical supply to you appliance, consult a qualified electrician before use.









HENDI

Tools for Chefs

Manufacturer: Hendi B.V.

Innovatielaan 6

6745 XW De Klomp, The Netherlands

Tel: +31 317 681 040

Email: info@hendi.eu

Hendi HK Ltd.

1208, 12/F, Exchange Tower

33 Wang Chiu Road, Kowloon Bay, Hong Kong

Tel: +852 2154 2618

Email: info-hk@hendi.eu

Importer: Neville UK PLC

Unit 6, Viking Way, Erith, Kent.

DA8 1EW, England

<https://www.nevilleuk.com/>

Find Hendi on internet:

www.hendi.eu

www.facebook.com/HendiToolsforChefs

www.linkedin.com/company/hendi-food-service-equipment-b.v.

www.youtube.com/HendiEquipment

- Changes, printing and typesetting errors reserved.